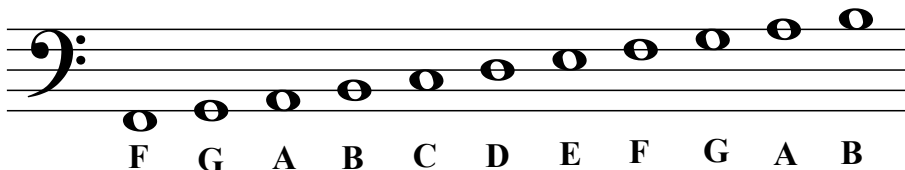
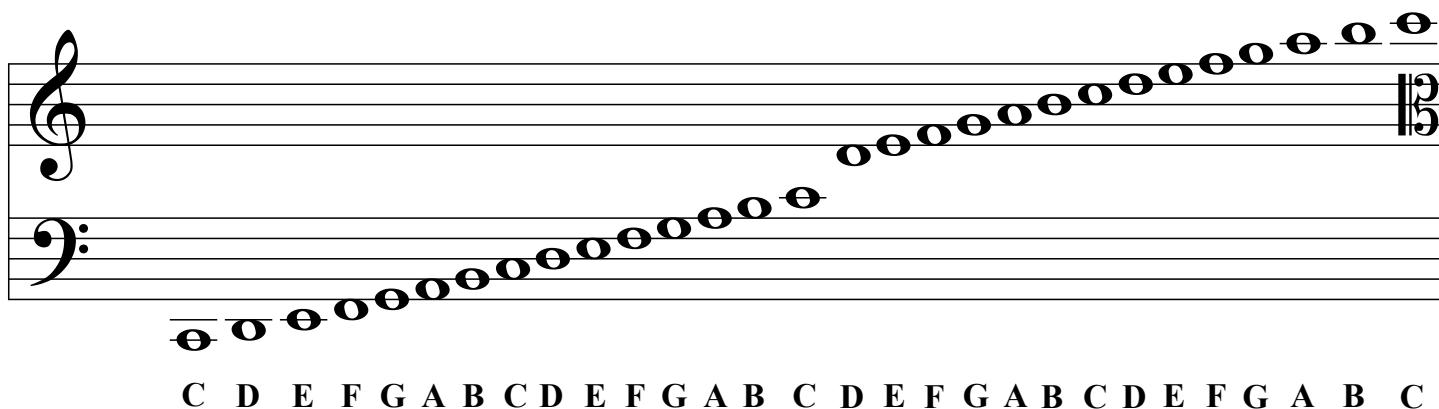


# The Staff - Bass Clef

Another important clef frequently used is the **bass clef**, shown at the right. The notes of this clef will sound lower than those of the treble clef. Note that the two dots of this clef surround the second line in the staff. This note is an F, so this clef is also called the F clef. The second staff shows the notes of the **bass clef**.



For many musical reasons the treble and bass staff are often combined to form the **Grand staff**. You will notice that a bracket and then a line extends from the top of the treble clef to the bottom of the bass clef. The notes depicted on this particular grand staff begin with C below the bass staff. Those two extra lines are called ledger lines and allow composers to extend the possible notes below and above this Grand Staff or any of the other staff systems. Plural of staff is staves. That is two staves make up the grand staff.



Another often seen clef is the Alto clef shown below. You can see it "points" to the middle line which is understood to be the note middle C.

